



ONTARIO ASSOCIATION OF ARCHITECTS
HEADQUARTERS LANDSCAPE DESIGN COMPETITION 16 MAY 2024

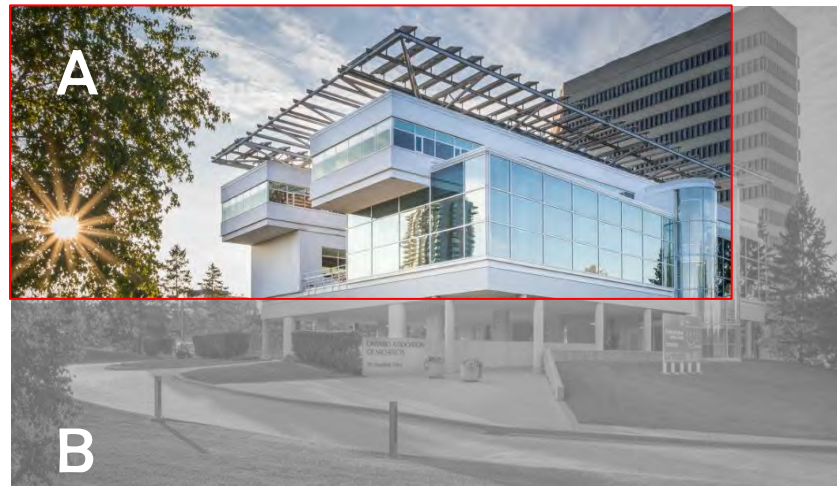
IMAGE 1. OAA HQ . FRONT VIEW RENDERING

INTRODUCTION

First opened in 1992, the OAA headquarters building has recently been successfully retrofitted for better interior functioning, performance, and energy efficiency under the 'Renew + Refresh' initiative that is hoped to extend to the site as well by this competition.

APPROACH

The current OAA functions are organized in 2 occupied floors above, leaving the first floor unoccupied as an open piloti. The new intervention on the First Floor is considered '**Mutable**', while the '**Immutable**' parts in the upper floors are preserved.



OAA HQ . EXISTING VIEW

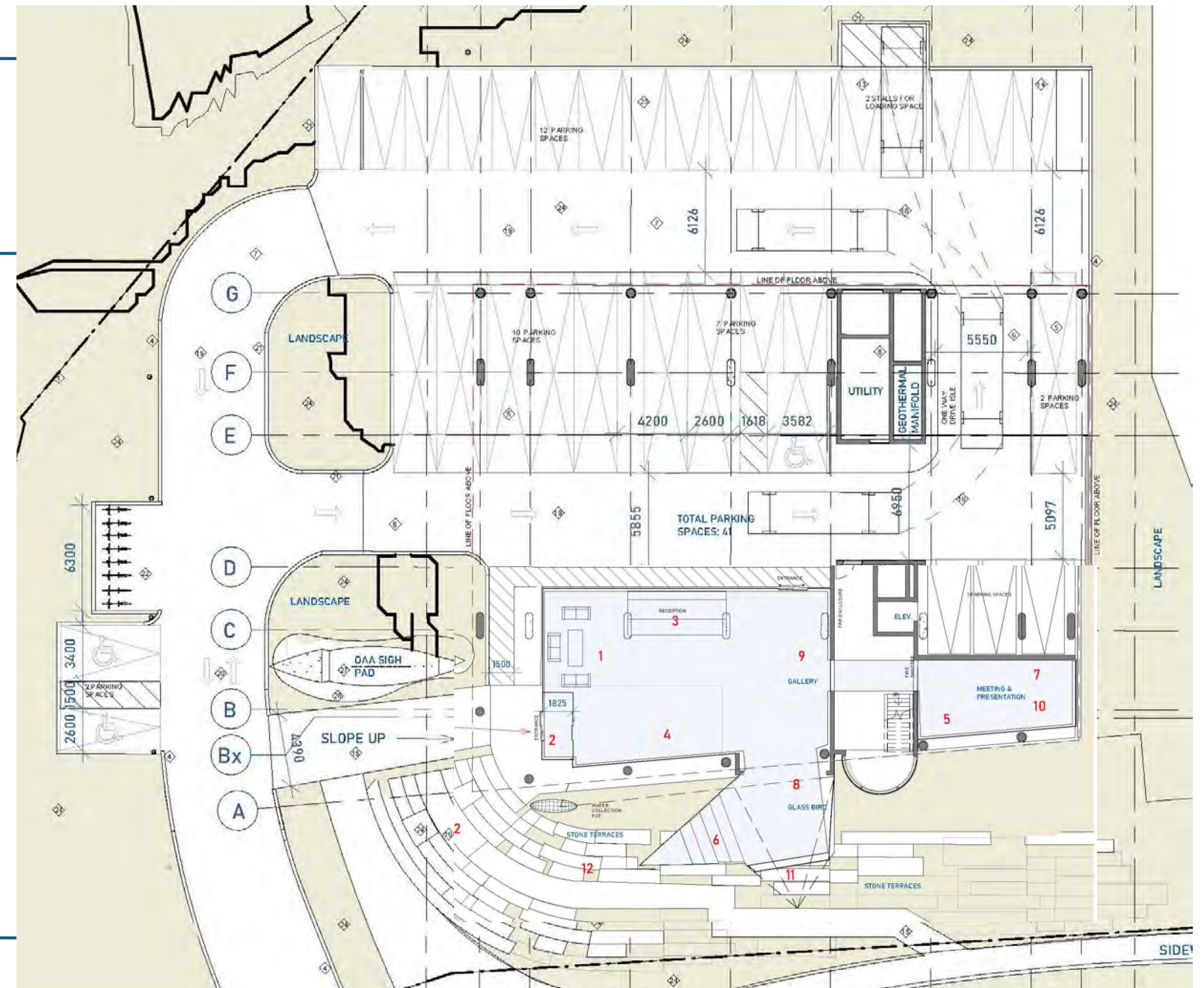
- A. '**Immutable**' Iconic Parts to preserve.
- B. '**Mutable**' Parts considered a palette for new addition and alteration.

VISION & CONCEPT

This vision is not for staging a final outcome, only implementation for temporal succession of interventions. Like notes added by a reader in the margin of a book, the proposed design retrofits parts of the existing building and creates a public welcome place in a new landscape setting.

1. OAA HEADQUARTERS, LEGACY & CONTEXT

The iconic OAA headquarters is the most important building representing architects in Ontario and their dedication to serving public interest and is a source of pride for all to see. A primary principle of sustainability is to utilize existing buildings and spaces. The unoccupied piloti space under the building is readily adaptable to provide a new Welcome Hub.



SITE / FIRST FLOOR PLAN (NTS)

WELCOME HUB LEGEND

1. Welcome Lobby/Lounge.
2. Grand Steps. Entrance Vestibule and Foyer visible and accessible. A rear entrance provides direct access for the staff members.
3. New Reception and public front. Like a storefront, visitors are welcome.
4. Public Gallery, Presentation and Gathering Place. Public to visit freely, view the exhibits, attend events and find more info about architecture.
5. Multi-purpose Meeting and Presentation room.
6. Small groups of children and student of all ages may join evens and presentations on step-seating.
7. Computer station for architects, students and public access the OAA Digital Archives.
8. Video display of the site's history, Moatfield Ossuary, Mississaugas of the Credit, as well as the Anishinaabeg, the Chippewa, the Haudenosaunee, and the Wendat.
9. Showcasing of the building energy performance, Solar and Geothermal and others.
10. OAA Digital Archive and Research Station.
11. Large Videotron outside
12. Steppingstone Terraces

VISION & CONCEPT

2. PUBLIC WELCOME

To encourage public engagement and provide education opportunities are carved out in new spaces in the unoccupied part of the 1st floor. An easily visible entrance with a new OAA sign and a front yard as a Public Open Space contribute to Public Welcome.

2.1. WELCOME HUB

The proposed Welcome Hub provides a new Main Entrance visible from the street and is served by the grand stairs and a ramp for accessibility. A newly created space on the 1st floor provides a new lobby and public gallery open to all free of charge.



FRONT ENTRANCE AND THE OAA NEW SIGN

2.2. PUBLIC ARTS PLUG-IN STATION

A Plug-in steel frame on the exterior of the building for Art Installations. The building becomes a canvas to showcase advances in design thinking and architecture. Periodic Design Completions for Art Installation will generate public discourse, engagement, and best talents' participation. An exterior Videotron for showcasing architecture, newsreel, and public announcements.

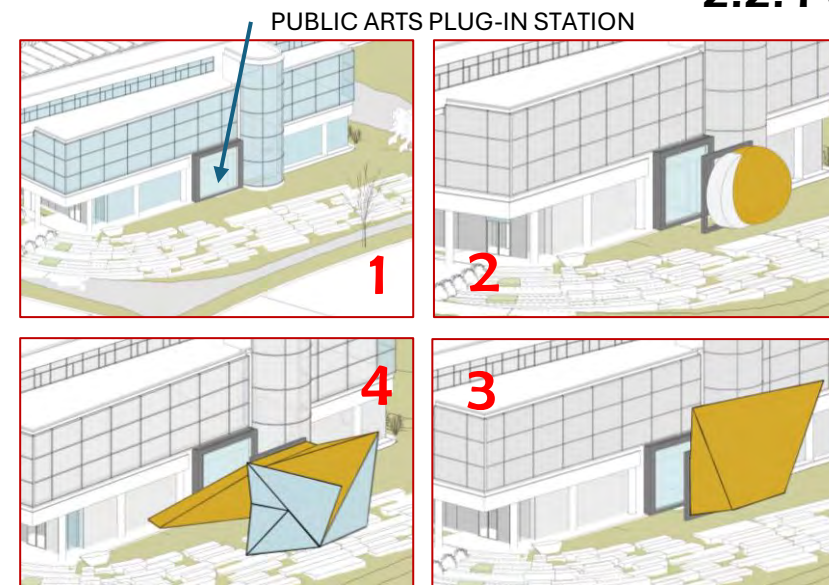
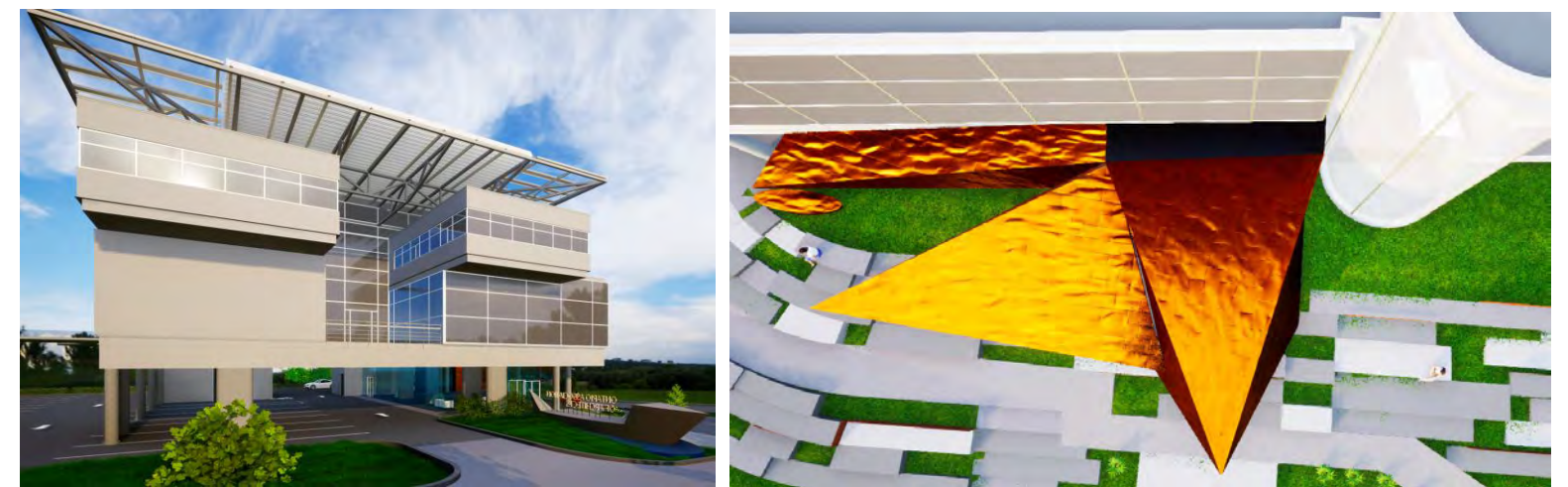


DIAGRAM . PLUG-IN STATION

1. Steel frame permanently anchored to the building may be used as an interim exterior Videotron but replaced with arts installations periodically as part of future Design Competitions.
2. & 3. Examples of potential Art Installations
4. The 'Glass Bird', the 1st proposed Art Installation.



SOUTH VIEW TOP VIEW

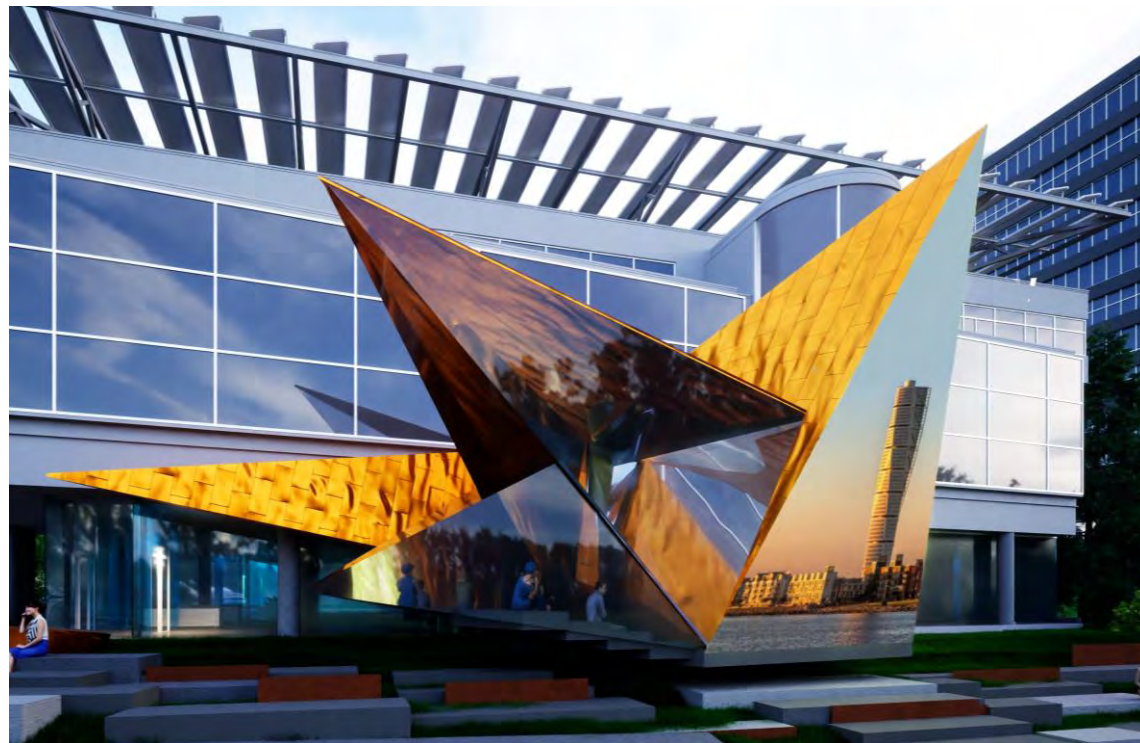


FRONT YARD VIEW

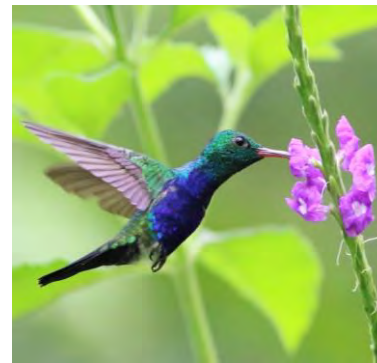
VISION & CONCEPT

2.3. GLASS BIRD

- A visually striking 'Glass Bird' changing temporally adds drama to the robust calm and enlivens the articulated geometries of the existing building.
- The sculptural 'Glass Bird' is inspired by 'Hummingbird' hovering on the OAA building like a flower.
- Birds are frequently depicted in Indigenous arts, regarded as spiritual beings, and are often seen as messengers of spiritual realm.
- The opposing geometries of the 'Glass Bird' with the 'Steppingstone Terraces' create unexpected moments of potential conversation about inseparable domains of architecture and landscape.
- The opposing geometries of the 'Glass Bird' and the 'Steppingstone Terraces' create a memorable setting and a dynamic interplay of architecture, arts, and landscape.



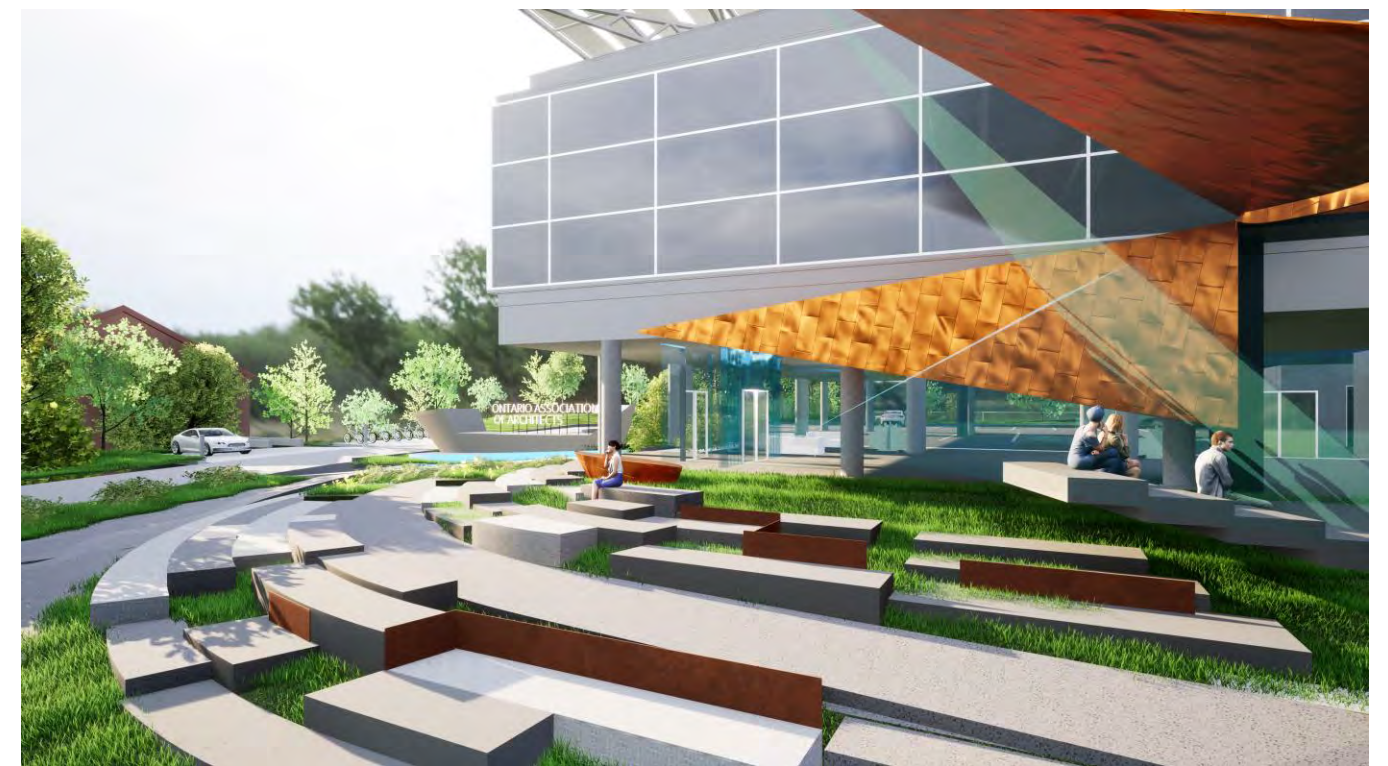
'GLASS BIRD'



the humming bird



STEPPINGSTONE TERRACES AND THE GLASS BIRD



FRONT YARD

2.4. STEPPINGSTONE TERRACES

Outdoor seating created by Steppingstone Terraces transforms the front yard into a Public Open Space. Local stone materials set into the natural terrain integrates harmoniously with a natural design akin to rocks in the mountain. The dynamic design also contributes to stormwater management, erosion control, groundwater recharge and serves as viewing terraces.

VISION & CONCEPT

The landscape is envisaged to provide an overall canvas and harmony between the Existing Building, the Glass Bird, and the Public Arts installation in garden like setting. The front yard is transformed into a Public Open Space.

GRAND ENTRANCE : The main entrance is proposed with locally sourced indigenous materials and plants. Using a variety of materials, the design provides ample microclimates conducive to gathering, socialization, habitat creation, flood and erosion mitigation, and Public Open Space while improving overall canopy coverage.

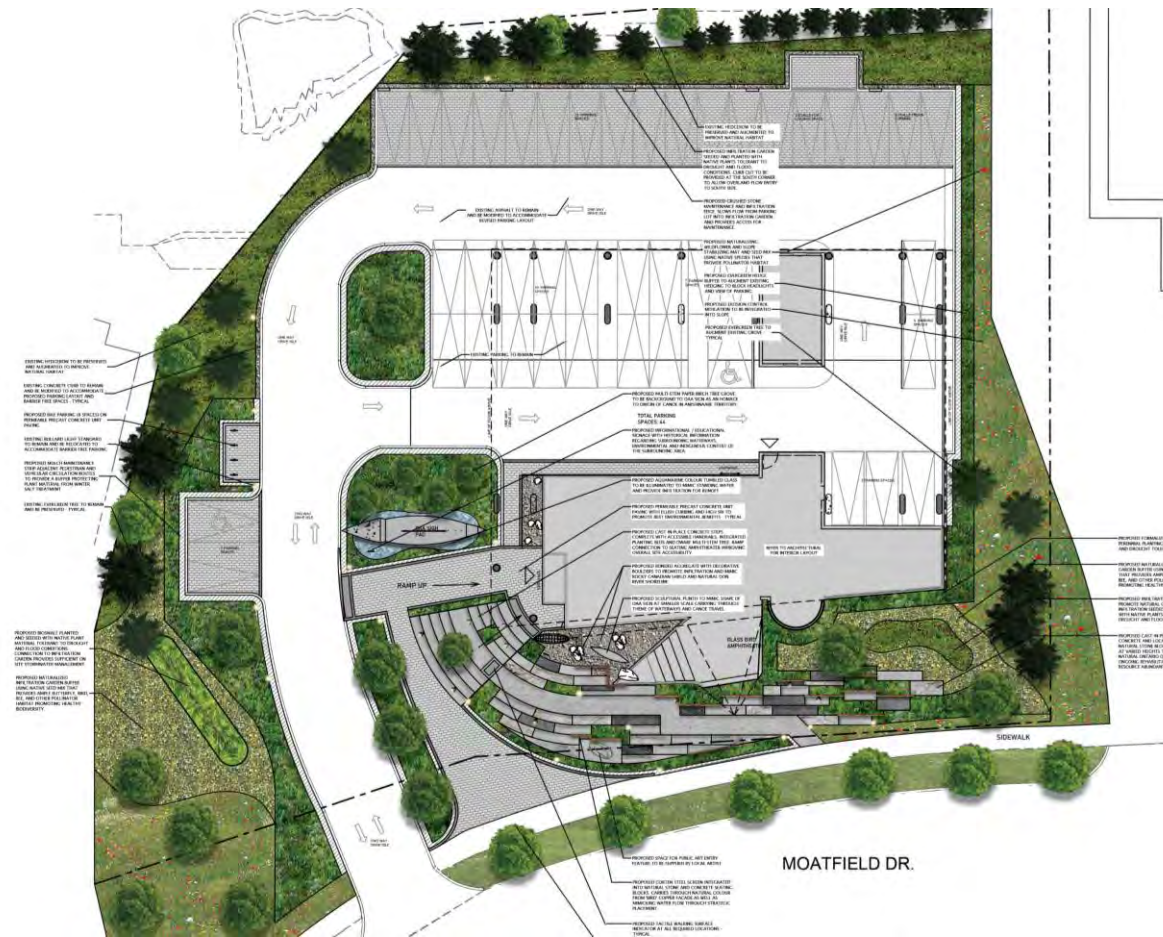
STEPPINGSTONE TERRACES: The tiered blocks of natural stone slabs are placed stepping down in the existing terrain creating public seating and viewing opportunities. Pockets of planting soften the ambience and emulate nature. Short Corten steel panels are integrated into plants between the stones akin to the flow of Don's floodplain pattern.

PUBLIC ARTS : In addition to the Steppingstone ensemble and platforms for public arts installation visible from the sidewalk, the OAA sign is designed mimicking a canoe referencing ancestral indigenous culture. Crushed and tumbled aquamarine glass like a natural 'puddle' to augment the canoe and induce the appearance of buoyancy.

STONE & BOULDER POCKETS : In lower light areas under the building and the Glass Bird, locally sourced stones in various sizes mimic Lake Ontario's rocky shores and serve as infiltration and permeable grounds.

SITE LIGHTING : By providing a variety of ambient lighting at the pedestrian scale, the emphasis is shifted from vehicular areas to the Main Entrance and Steppingstone Terraces including strip lighting at the steps and Corten dividers. More drama is created by the illuminated letters for the OAA sign floating above the new Canoe Sculpture. Light pollution is minimized enhancing the existing lighting for parking and drive aisles.

GREEN INFRASTRUCTURE : The landscaping is designed to act as natural stormwater management using bioswales, infiltration gardens, and infiltration garden buffers. By providing a range of green infrastructure, the site has a sequential system to manage rain and flood water in coordination with the proposed civil work for stormwater management.



LANDSCAPING PLAN (nts)



FRONT YARD LANDSCAPING

3. LANDSCAPING

PLANT LIST

BOTANICAL NAME	COMMON NAME	DROUGHT TOLERANCE	NATIVE	POLLINATOR SPECIES
TREES - DECIDUOUS:				
<i>Acer saccharum</i>	Sugar Maple	NO	YES	NO
<i>Asimina triloba</i>	Pawpaw	NO	YES	NO
<i>Betula papyrifera</i>	Paper Birch	NO	YES	YES
<i>Juglans cinerea</i>	Butternut	NO	YES	NO
<i>Quercus rubra</i>	Red Oak	NO	YES	NO
TREES - EVERGREEN:				
<i>Abies balsamea</i>	Balsam Fir	NO	YES	NO
<i>Pinus resinosa</i>	Red Pine	YES	YES	NO
SHRUBS - DECIDUOUS:				
<i>Amelanchier canadensis</i>	Serviceberry	NO	YES	YES
<i>Cornus sericea</i>	Red Osier Dogwood	YES	YES	YES
<i>Diervilla lonicera</i>	Bush Honeysuckle	YES	YES	YES
<i>Rhus aromatica 'Gro-Low'</i>	Gro-Low Fragrant Sumac	YES	CULTIV AR	YES
<i>Salix discolor</i>	Pussywillow	NO	YES	NO
<i>Hypericum kalmianum</i>	St. Johns Wort	YES	YES	YES
<i>Ilex verticillata</i>	Winterberry Holly	NO	YES	YES
<i>Vaccinium angustifolium</i>	Lowbush Blueberry	YES	YES	YES
<i>Viburnum lentago</i>	Nannyberry	NO	YES	YES
SHRUBS - EVERGREEN:				
<i>Ilex glabra 'Gem Box'</i>	Gem Box Inkberry Holly	NO	NO	YES
<i>Taxus canadensis</i>	Canadian Yew	YES	YES	YES
PERENNIALS:				
<i>Aquilegia canadensis</i>	Wild Columbine	NO	YES	YES
<i>Asclepias syriaca</i>	Common Milkweed	YES	YES	YES
<i>Echinacea purpurea</i>	Purple Coneflower	NO	YES	YES
	Blue Wedgewood			
<i>Hosta 'Blue Wedgewood'</i>	Hosta	NO	NO	NO
<i>Iris versicolor</i>	Blue Flag Iris	NO	YES	NO
<i>Rudbeckia laciniata</i>	Cutleaf Coneflower	NO	YES	YES
<i>Aster novae-angliae</i>	New England Aster	NO	YES	YES
<i>Salvia nemorosa</i>				
'Caradonna'	Meadow Sage	NO	NO	YES
<i>Sedum x 'Xenox'</i>	Xenox Sedum	YES	NO	YES
FERNS:				
<i>Dryopteris filix-mas</i>	Male Fern	NO	YES	NO
<i>Matteuccia struthiopteris</i>	Ostrich Fern	NO	YES	NO
GRASSES:				
<i>Andropogon gerardii</i>	Big Blue Stem	YES	YES	NO
<i>Carex appalachica</i>	Appalachian Sedge	YES	YES	YES