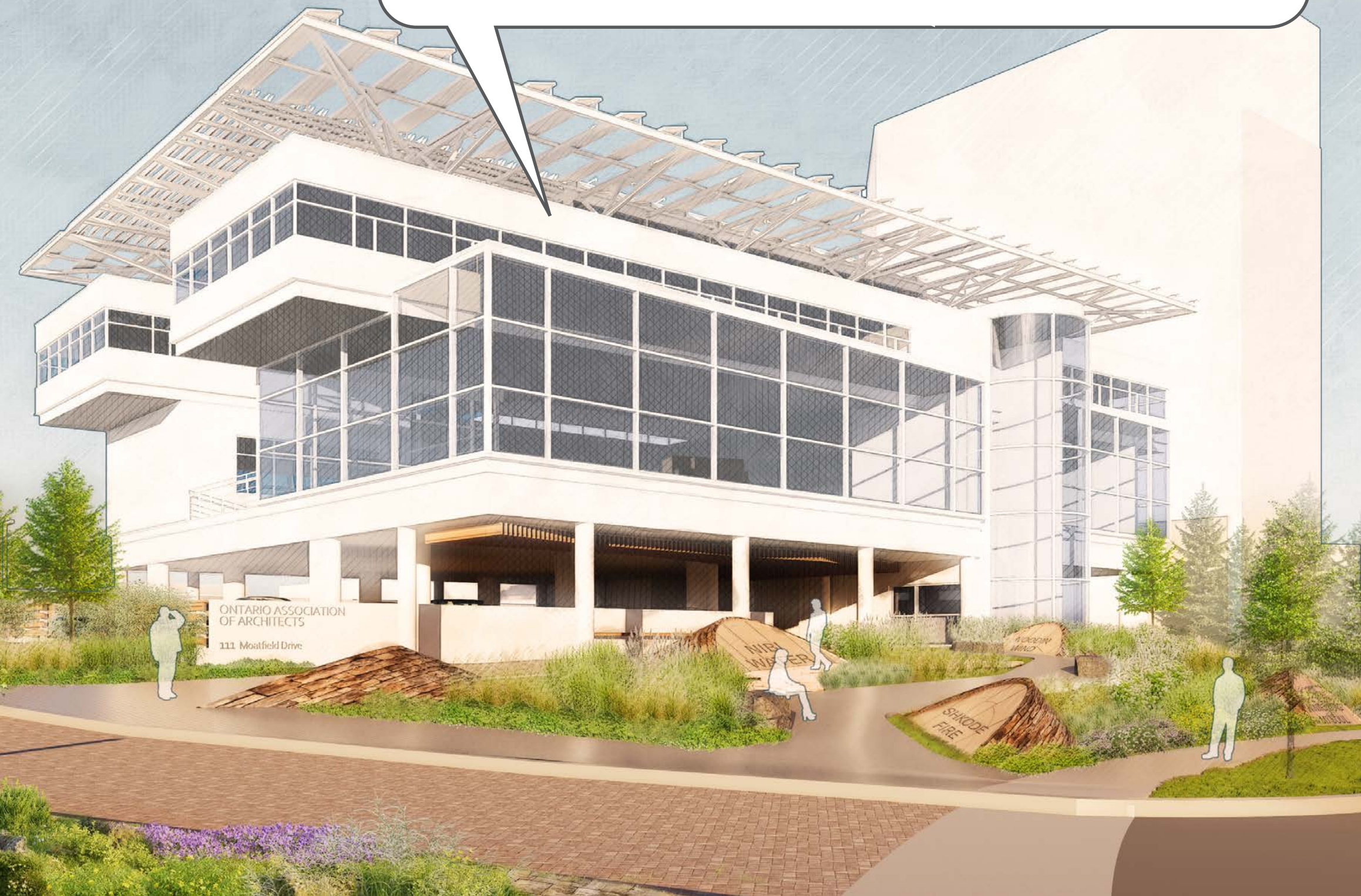


THE TALKING LANDSCAPE

Listen to the land. Honour its history. Protect its future.



OAA HEADQUARTERS COMPETITION

TEAM SYCAMORE

THE TALKING LANDSCAPE

Listen to the land. Honour its history. Protect its future.

We acknowledge that the land this building is on is the traditional and ancestral territory of many nations, including the Anishinabewaki, Haudenosaunee, Mississauga, Mississaugas of the Credit First Nation, and Wendake-Nionwentsïo, and is now home to many diverse First Nations, Inuit, and Métis peoples.

We recognize that our relationship to this land and its original caretakers is in urgent need of healing. In the face of many environmental challenges, and in light of the harm we have caused, it is our responsibility to learn to live on this land as though the wellbeing of future generations depends on it. It is by listening to and reflecting on the wisdom teachings of the traditional caretakers of this land, and changing our ways, that we can better our relationship to it.

For millennia, Indigenous people have transmitted knowledge and wisdom through storytelling. A key part of our vision for this landscape design is to use the medium of storytelling to invite visitors to reflect on their connection to the land and to inspire action.

We have imagined a winding path bordered by a series of stones which appear to have emerged from the earth. The path represents our journey of healing, while the stones are gifts of wisdom we receive

along the way. On each of the stones, a message is carved that conveys a short yet powerful story. The stories urge us to learn about the land, acknowledge its history, and act to protect the future. Each message will be written using language – both Indigenous and English – and concepts developed with guidance from an Indigenous advisor.

Nestled between these stones, carefully selected native plants help familiarize us with the diversity, balance, and resilience of the flora indigenous to this land. They are integral to our journey of healing, and by being among them as we come and go, we become attuned to their natural rhythms and cycles. As these plants flourish, we are reminded of the better world we could create if we lived and acted in harmony with Indigenous caretaking wisdom.

Next to the path are several stone benches that invite us to sit. Surrounded by native plants, we pause to reflect on the meaning of the stories we have read. Through the act of listening, we are now more open to the possibility of healing our relationship to the land. We might have started our journey along this path with no specific intention. But when we rise, we move forward differently. We carry these messages with us, along with a determination to protect our future. We are changed by the talking landscape.



SITE PLAN

A KEY PART OF OUR VISION IS TO USE STORYTELLING TO INVITE VISITORS TO REFLECT ON THEIR CONNECTION TO THE LAND AND INSPIRE ACTION.



Legend

- Project Site
- 1 Talking Stones
- 2 The Healing Path
- 3 Skipping Stones
- 4 Stone Bench
- 5 The Moving Gardens
- 6 Pollinator Buffers
- 7 Stormwater Swale
- 8 Wooden Fence
- 9 The Long Bench
- 10 Fins Ceiling
- 11 Permeable Paving
- 12 EV Charging Stations (3 nos.)
- 13 Bike Racks (10 nos.)
- 14 Bike Charge & Repair Station
- 15 Stormwater Tank
- 16 Trench Grates
- 17 Oil Separator
- 18 Solar Bollard Lights

1:300

On Planting

We have selected native plants that respond to local ecology and seasonal cycles, while adhering to TRCA guidelines. They acquaint us with the diversity, balance, and resilience of Indigenous flora, acting as a public education platform to deepen our connection to the land and its original caretakers.

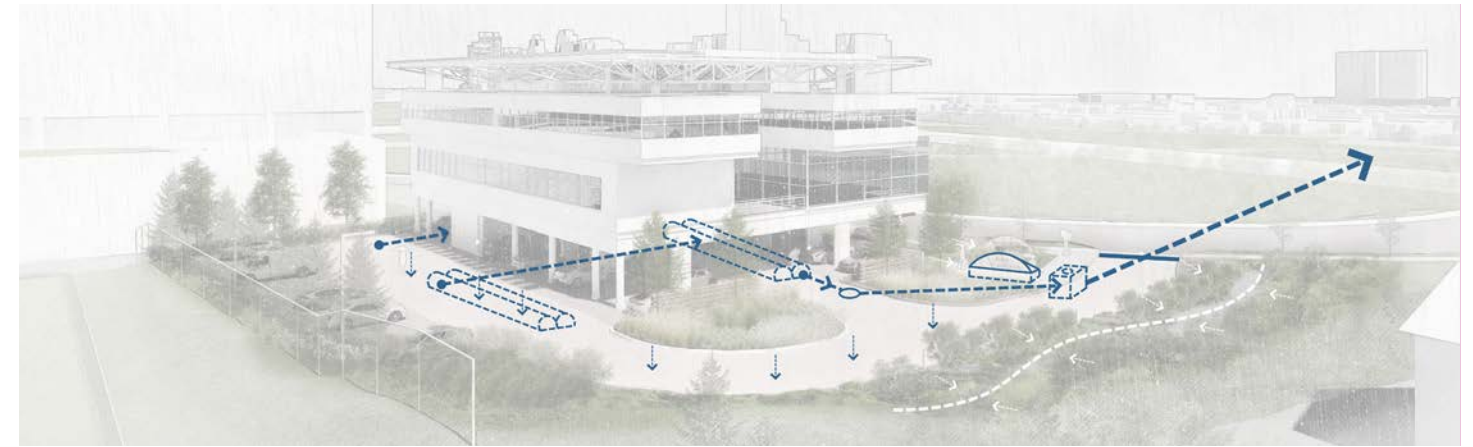
On Sustainability

Grey and green technologies as well as 'urbanite' material recycling opportunities have been utilized to support sustainability initiatives. This strategy also supports Class A contaminants remaining onsite, reducing cost and landfill burdens. The base structure for Talking Stone mounds will be made of on-site waste materials, existing pedestrian limestone will be reused, and extensive native and TRCA approved plant material will create softer and more permeable surfaces for stormwater infiltration.



On Stormwater Management

Through a combination of detention and infiltration chambers, oil / grit separator, permeable paving, and low-impact development naturalization, we exceed the minimum requirements of the City of Toronto Wet Weather Flow Management Policy. While positively affecting the OAA Headquarters and adjacent Block B lands, the Don River will receive less stormwater runoff with greater release controls and substantially improved water quality.



WE ENVISIONED A SERIES OF STONES EMERGING FROM THE EARTH, SYMBOLIZING GIFTS OF WISDOM. EACH STONE BEARS A CARVED MESSAGE, URGING US TO HONOUR THE PAST AND PROTECT THE FUTURE USING INDIGENOUS LANGUAGE AND CONCEPTS.

