

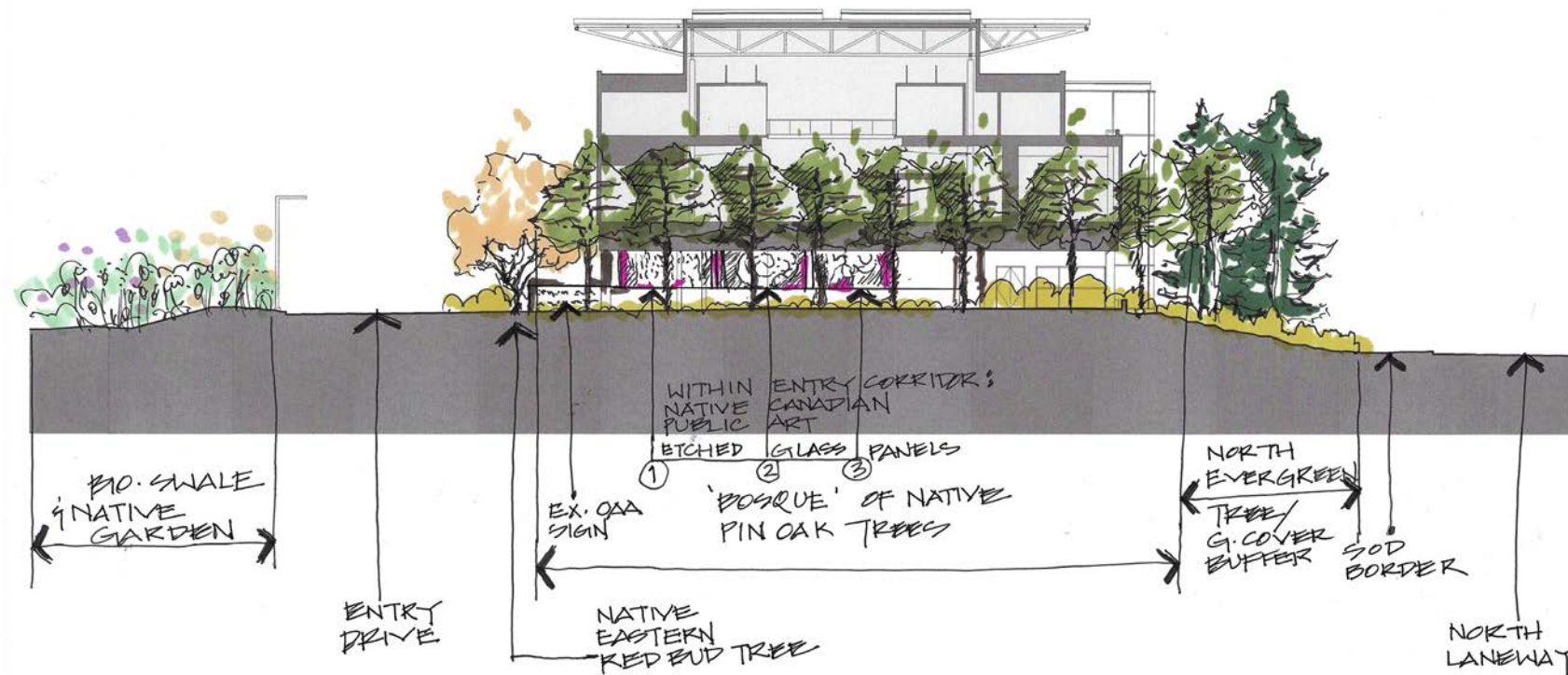
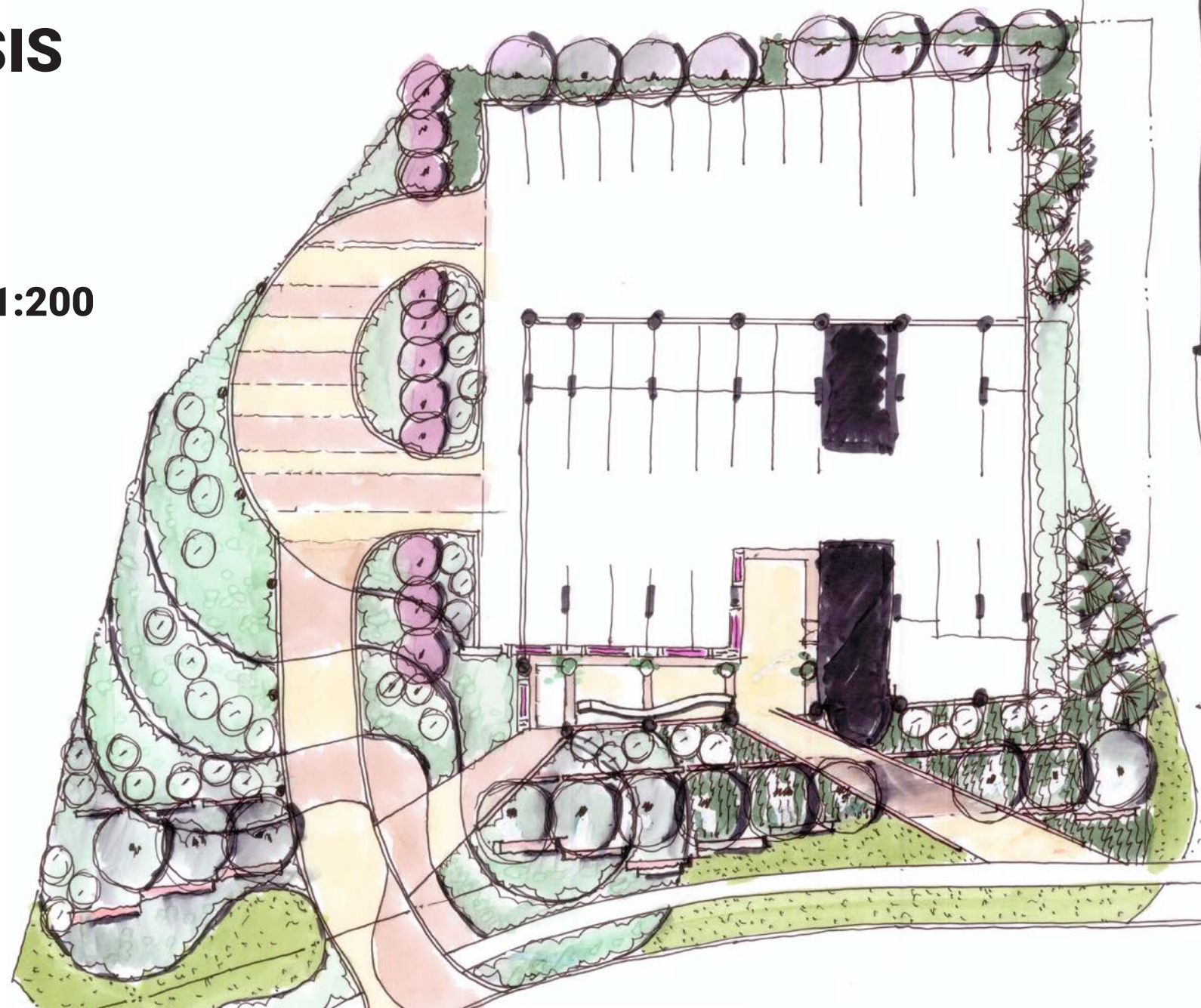
Vision Canadensis
Team: Spruce

VISION CANADENSIS

TEAM: SPRUCE

Hand Drafted Plan 1:200

Hand Drafted Cross Section 1:200





LEGEND

- 01 PERMEABLE PAVERS (2 COLORS)
- 02 STONE SLAB RETENTION WALL (3 FT. HIGH APPROXIMATELY)
- 03 ROUGH STONE SLAB ACCENT SLAB
- 3A LIMESTONE LEDGE ROCK SLAB 18" HIGH SEATING
- 04 FORMED CURVILINEAR CONCRETE SEATING
- 05 ETCHED GLASS PANELS (LIT FROM WITHIN)
- 06 5 PLANTERS
- 07 EXISTING CONCRETE WALL WITH EXISTING OAA SIGN
- 7A NEW SIGNAGE
- 08 NEW 2 TONE UNIT PAVERS
- 09 NEW STONE MONOLITH RISERS (2 SETS OF 4 RISES)
- 10 PEA GRAVEL BANDS
- 11 NEW RAMP ENTRY STONE SLAB WALLS
- 12 EXISTING CONCRETE WALL TO REMAIN
- 13 GARBAGE & SERVICE VEHICLE TURN AROUND
- 14 EXISTING SOLAR LIGHTS TO REMAIN
- 15 BIOSWALE/PERENNIALS
- 16 (2) E.V. CHARGING STATIONS



Scale 1:200

**Vision Canadensis
Team: Spruce**



Vision Canadensis
Team: Spruce

VIEW 1- AERIAL VIEW FROM S-E CORNER



Vision Canadensis
Team: Spruce

VIEW 2-NORTHERLY VIEW FROM S-E CORNER



Vision Canadensis
Team: Spruce

VIEW 3- ZOOMING IN FROM S-E CORNER



Vision Canadensis
Team: Spruce

VIEW 4-SOUTH PEDESTRIAN RAMP



VIEW 5- FRONT ENTRY CORRIDOR-GALLERY

Vision Canadensis
Team: Spruce



VIEW 6-LOOKING S-W FROM WITHIN PARKING LOT

Vision Canadensis
Team: Spruce



VIEW 7-LOOKING NORTH FROM SOUTH SIDE

Vision Canadensis
Team: Spruce



VIEW 8-AERIAL VIEW LOOKING FROM N-W CORNER

Vision Canadensis
Team: Spruce



VIEW 9-AERIAL VIEW LOOKING FROM N-E CORNER

Vision Canadensis
Team: Spruce



VIEW 10-NEW PEDESTRIAN RAMP-RISERS ENTRY

Vision Canadensis
Team: Spruce



VIEW 11-CENTRE VIEW FROM STREET

Vision Canadensis
Team: Spruce



VIEW 12-CLOSE UP CENTRE VIEW FROM STREET

Vision Canadensis
Team: Spruce